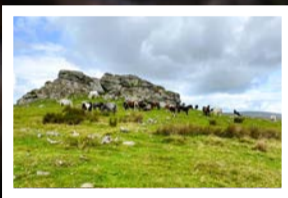
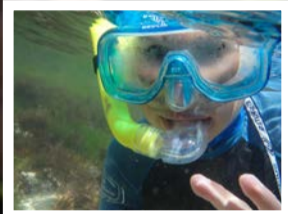
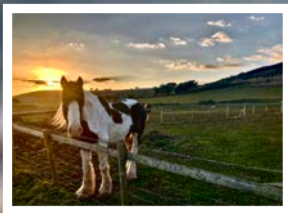


## On site you will find...

- Churchwood Stores – our well-stocked licensed shop
- Visitor Information Centre – browse the internet with free wifi or look through our comprehensive range of leaflets on places to go and things to do, plus lots of information about local wildlife
- Churchwood Launderette
- Wembury Bay Riding School
- Churchwood Forest School
- Pre-booking essential



## The locality offers...

- Wembury Beach and the The Old Mill Café
- Wembury Marine Centre  
An excellent resource with regular rock pool and snorkel safaris.
- Three friendly local pubs with good food
- Recreation Ground  
With children's play area, skateboard park, basketball court and free tennis court
- Staddon Heights Golf Club
- Plymouth Ocean City – just a 20 minute drive away

## The wider area offers...

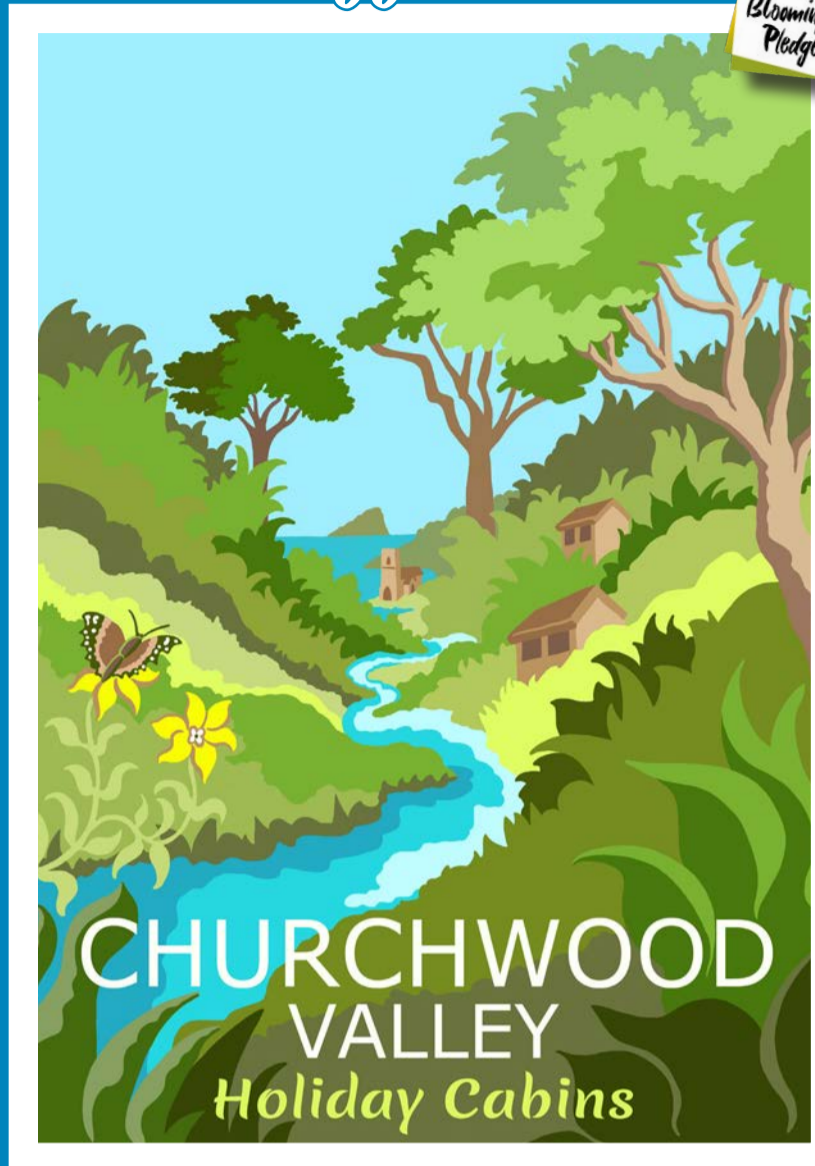
- Many children's attractions, National Trust properties and gardens, fabulous beaches, the South West Coast Path and Dartmoor on the doorstep!



Churchwood Valley Ltd, Wembury Bay, Plymouth, South Devon PL9 0DZ  
Tel: 01752 862382 www.churchwoodvalley.com email: info@churchwoodvalley.com

# A holiday park with a difference

David Bellamy Blooming Marvellous Pledge for Nature



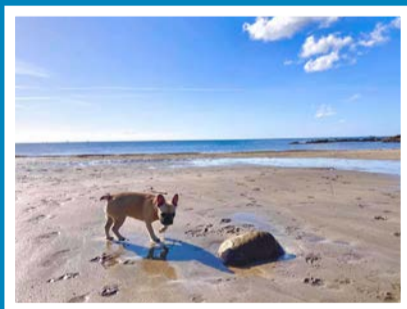
We have wildlife not nightlife

# In harmony with nature...



If your idea of the perfect holiday involves peace and quiet, the coast and countryside and being surrounded by wildlife, then Churchwood Valley is the place for you.

Nestling in a sheltered wooded valley, with a beautiful unspoiled beach just a few minutes walk away, Churchwood Valley is a stunning



place to stay at any time of year. The quiet of the countryside combined with birdsong and the sound of waves rolling onto the beach create a relaxing and ever-changing soundscape. Whatever the season, there's always plenty to see in the woodland and on the coast – as we like to say, we have wildlife not nightlife!

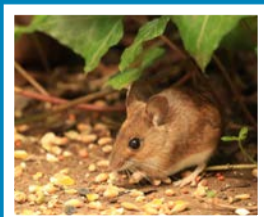
Founded by Pat and Bob Stansell in 1950, Churchwood Valley is still owned and run by members of the Stansell family. The family and staff are committed to preserving Churchwood's natural abundance of flora and fauna, while offering comfortable secluded accommodation to our guests.

We are proud to have received a David Bellamy gold award for 24 successive years – that's gold for every year the award was run. Now we have joined the David Bellamy Blooming Marvellous Pledge for Nature.

We look forward to welcoming you soon!



Directors John, Shirley and Tom Stansell



## The cabins and lodges

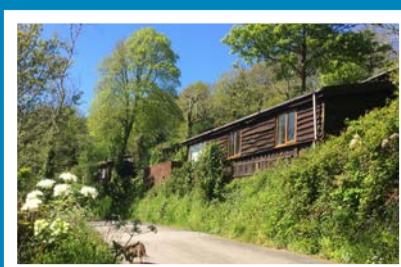
Churchwood Valley is a beautiful, natural wooded valley running down to the sea. Look closely and, hidden among the trees, you'll see lodges and cabins nestling on the hillside offering seclusion, privacy and wonderful views.

Each has its own open patio area surrounded by trees and wildflowers. It's the perfect place to sit and appreciate the woodland and abundant wildlife, enjoy a relaxing drink or BBQ with family or friends.

There's a car parking space near each cabin and private roads and paths give access to the beach, an unspoiled stretch of rock pools and shingle with sand at low tide. Adjoining National Trust land, the beach is no more than a 10-minute stroll away from any of the cabins.

Up to two well-behaved dogs are welcome in each cabin, for a small charge, and dog exercise areas are provided.

We can provide BBQs and charcoal for a small charge.



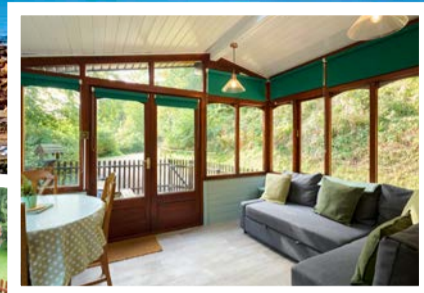
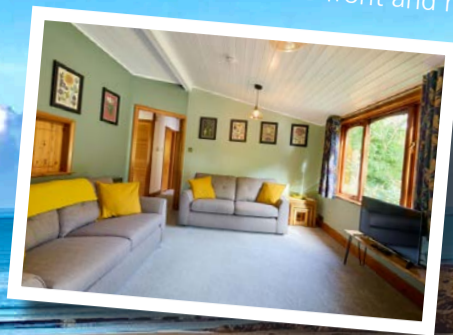
## Oak Lodge & Chestnut Lodge

Luxury lodges with fabulous sea view! Sleep six in one double and two twin bedrooms. Bathroom, plus master en-suite. Dishwasher and washing machine.



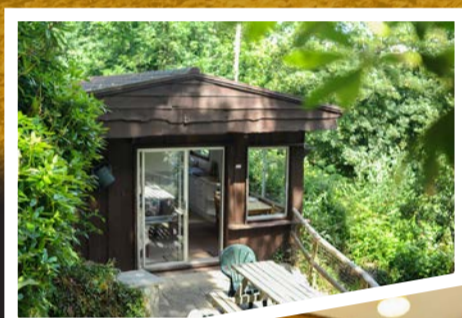
## Garden Lodge

Secluded and spacious, sleeping up to six people in two bedrooms and a double sofa bed in the sun lounge. Two bathrooms, sitting room, sunlounge and carport. Gardens to front and rear. Dishwasher and washing machine.



## A6+ Cabin

A6+ cabins can sleep six and have either a double or twin beds in the main bedroom, twin beds in the second bedroom and a double sofa bed in the lounge. Bath with shower over. Washing machine and dishwasher.



## Churchwood Cabins & Lodges

We have a range of cabins and lodges that can accommodate up to six guests so there's sure to be something to suit everyone – from singles to families or groups of friends. Each cabin and lodge is fully equipped with everything you need for your self catering holiday and include:

- ✓ Cooker, fridge and microwave
- ✓ Crockery and cutlery
- ✓ Cooking pans and utensils
- ✓ TV with Freeview channels, DVD and radio
- ✓ Hairdryer

Some of our properties also have a washing machine and dishwasher.

Beds are made up ready for your arrival.

Towels are not provided, but you can hire them from us.

Wi-Fi is available in all cabins.

Up to two dogs welcome for an additional charge.

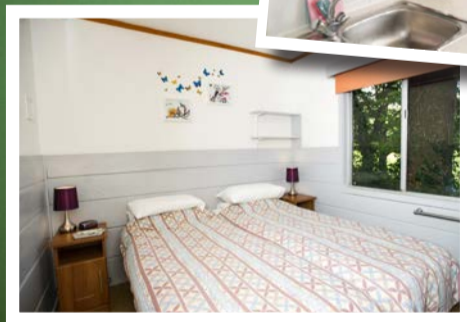
## DL6 Lodge

A DL6 Lodge can sleep up to six and has one double room, one twin room and a double sofa bed in the lounge. Bath or shower. Dishwasher and washing machine.



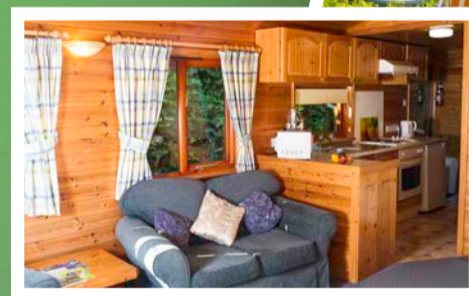
## A6 Cabin

A6 cabins can sleep up to six and have two twin bedrooms and a double sofa bed in the lounge, bath with shower, or shower only.



## Pinelodge

The Pinelodges sleep four and have a double bed in the main bedroom, twin beds in the second bedroom and a bathroom with shower.



## A4+ Cabin

A4+ cabins can sleep up to four and come with either twin or double in the main bedroom and twin beds in the second bedroom, bath with shower, or shower only.



## A2 & A2+ Cabin

These compact cabins are great for two people. A2+ has double beds and over bath shower, A2 comes with a double or twin beds and shower cubicle.

