

Plymouth
Britain's Ocean City

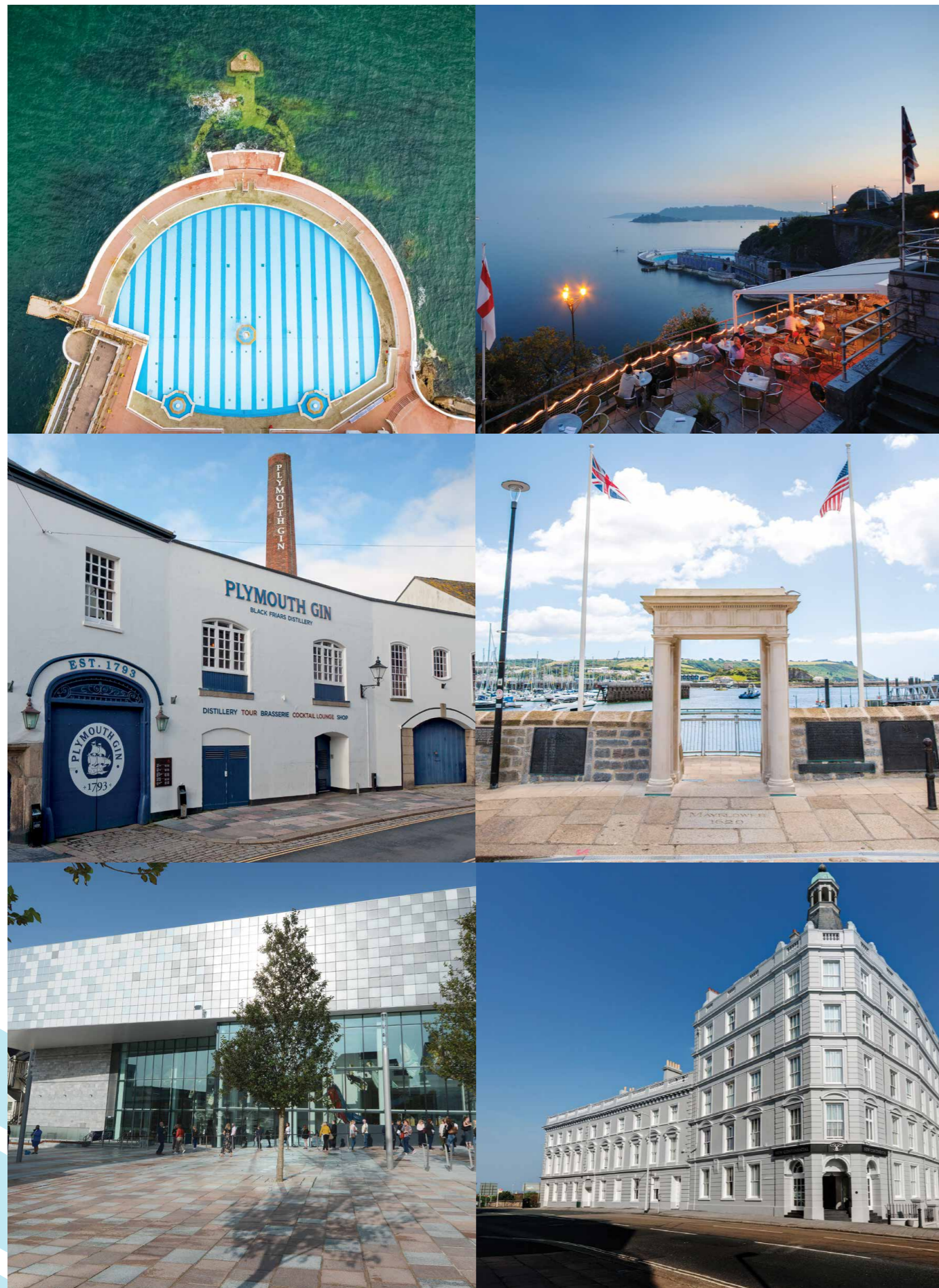


PLYMOUTH GROUPS

AND TRAVEL TRADE GUIDE

WWW.VISITPLYMOUTH.CO.UK/TRAVELTRADE





PLYMOUTH WELCOMES GROUPS

Welcome to Plymouth, Britain's Ocean City, here you'll discover hundreds of years of history, from Sir Francis Drake to the Mayflower Pilgrims and the story of a city rebuilt after World War II, alongside vibrant arts and culture, incredible food and drink and the most incredible views you'll see anywhere in the South West.

Plymouth has an impressive waterfront which is completely unmissable. With quaint, historic spots, delicious food and drink and beautiful natural spaces to enjoy, there's plenty to explore.

Benefitting from a variety of transport access points from land, sea and air, Plymouth is the perfect destination for group day trips and short breaks.

Plymouth is home to some incredible group friendly attractions, with something for everyone to enjoy - from the UK's largest aquarium to historical boat trips around Plymouth Sound and exciting museums like The Box which can offer some inciteful Curator Tours, plus a visit to the famous Plymouth Gin Distillery, to see how this world-famous gin is made and learn about the history.

The city has an interesting and varied maritime history, and there are some fascinating local sites to be visited in the area dating from the 15th century onwards such as the famous Mayflower Steps where the Pilgrims set sail in 1620.

We have some great itineraries for your groups showcasing the Mayflower story in the city and our rich maritime heritage.

Historic Barbican

The Barbican is a vibrant place of cobbled streets, narrow lanes and more than 200 Listed Buildings, many of them Tudor and Jacobean, offer a wide range of cosmopolitan boutique shops, galleries, pubs, cafés and restaurants set amidst picturesque scenery. Great for free time as part of your group visit to Plymouth. There is also a coach drop off point very nearby.



Royal William Yard

Royal William Yard blends Plymouth's historic naval past with award-winning design. Home to a stunning collection of Grade I listed buildings, the yard has been reanimated to offer something new to experience on every visit, making it one of the best places to eat, shop, work, stay, relax and play in the heart of the South West. With excellent coach drop off points right outside.



GROUP FRIENDLY ATTRACTIONS

Plymouth is a vibrant waterfront city packed full of group friendly attractions, activities, shopping, entertainment and sightseeing. Come rain or shine you'll find something here for all types of groups.

Plymouth Boat Trips

Plymouth Boat Trips is the premiere cruise company in the South West, with tailored trips, perfect for groups and coach parties wishing to explore Devon and Cornwall. Step aboard and discover Plymouth Sound, the River Tamar, the historic Royal Naval Dockyard and the breathtaking scenery of the South West coast.

A variety of sight seeing cruises are all detailed on their website and they have dedicated group organisers on hand to help you plan and book your trip. All coach drivers and couriers can accompany their passengers on any cruise completely free of charge.
www.plymouthboattrips.co.uk



Bridging the Tamar Visitor and Learning Centre

Visit and find out all about the Tamar Estuary's iconic bridges, the 20th century Tamar Bridge and Isambard Kingdom Brunel's 19th century Royal Albert Bridge.

Guided group visits last 90 minutes and involve learning about the history and heritage of the both bridges and will include a guided tour onto the Tamar Bridge, stopping off at points of interest and appreciating the views over the River Tamar and its companion the Royal Albert Bridge, as well as a chance to ask questions from our knowledgeable and friendly guides. www.bridgingthetamar.org.uk/visit/group-visits/



The Box

The Box is a museum, gallery and archive where groups can discover more about Plymouth and its place in the world. We're a venue where a life-sized mammoth rubs shoulders with naval history, where archival film footage is shown alongside cutting edge contemporary art, and where you can have lunch under giant ship's figureheads.

Join our experts and curators to learn more about our fascinating collections and how we built The Box. Bespoke groups tours are available on request.
www.theboxplymouth.com



Plymouth Gin

Black Friars Distillery, the working home of Plymouth Gin since 1793, is the oldest working gin distillery in England and is situated in the heart of the historic port city of Plymouth.

Take a guided tour and learn about the art of making the world-famous Plymouth Gin, enjoy a tutored tasting of the range and then relax in the Refectory cocktail lounge – the ultimate place to enjoy a cocktail and where the Pilgrim Fathers are said to have spent their last night before setting sail in the Mayflower. Connoisseur Tours are available for small groups. Group evening tours are also available by appointment.
www.plymouthgin.com



Mayflower Museum

The new exhibition explores the Mayflower story in new ways. It begins with Wampanoag history and culture, thanks to an on-going partnership with members of the Native American tribal nation. Their insights are shared alongside the stories of earlier English voyages to America, which shaped histories and legacies on both sides of the Atlantic. The exhibition considers the impact of English colonisation on indigenous communities – then and now. It also reflects on commemorations through time, and England's changing, and enduring, relationship with America. www.mayflowermuseum.co.uk/



National Marine Aquarium

Visit the UK's largest Aquarium and be amazed by their fascinating underwater world and how they all play a part in conserving it.

The National Marine Aquarium is a registered charity committed to promoting a sympathetic understanding of the sea through programmes of education, conservation and research.

Bespoke groups tours are available on request.
www.national-aquarium.co.uk



Mount Edgcumbe House and Country Park

Visit Mount Edgcumbe House, the historic family collection and Earl's private garden; find out what life was like during WWII in their fantastic Blitz Experience. Drop into The Barrow Centre with its shops, arts and craft outlets and Farriers Café all based around the Victorian courtyard a stone's throw from the House. Come and see the working blacksmith and weaver bringing the estate back to life in the 21st century.
www.mountedgcumbe.gov.uk

Dartmoor Zoo

Hidden on the borders of Dartmoor National Park, Dartmoor Zoo boasts a wonderful 33 acres of woodland, celebrating a wide range of exotic and native animals, including the biggest variety of big cats in the South West of England.

From a tiger, a lion and cheetahs, to monkeys, meerkats and tapir, you're bound to find some of your favourites. With their unique enclosure designs, you'll also feel closer to these amazing animals than ever before. Bespoke group tours available on request.
www.dartmoorzoo.org.uk



Plymouth Walking Tours

Walking tours of Plymouth, perfect for visitors and groups. Welcoming, entertaining and engaging, delivered by Plymouth people.

Explore the historic city of Plymouth with our expert knowledgeable guides. Bespoke walking tours can be created for your group and can be tailored around themes which can focus on the Historic Barbican, Plymouth Hoe and waterfront and can include our wonderful maritime heritage.
www.plymouthwalkingtours.co.uk



Theatre Royal

The Theatre Royal Plymouth is the largest and best attended regional producing theatre in the UK and the leading promoter of theatre in the South West. There are three distinctive performance spaces: The Lyric, The Drum and the workshop space, The Lab.

The Theatre Royal Plymouth serves the South West with a wide range of theatre including classic and contemporary drama, musical productions and the presentation of national opera, ballet and dance companies. Group discounts available and Back Stage Tours. www.theatreroyal.com/



Buckfast Abbey

Explore Devon's Hidden Gem. The monks welcome you to their home and hope you find here, peace and tranquillity. Enjoy the Abbey's beautiful architecture and gardens, restaurant and shops and stay overnight in Northgate House Hotel.

Ask about our Experience Packages for groups of 10 - 50 people. Groups: **01364 645532** or Accommodation: **01364 645630**. Concerts and events all year round. Please check our website for the latest special offers and events. www.buckfast.org.uk



Elizabethan House

Elizabethan House is open April – September each year, Friday-Sunday, 12pm-4pm. Last entries are at 3.30pm. Pre booked entry can be arranged on alternative dates for Groups and Travel Trade visitors.

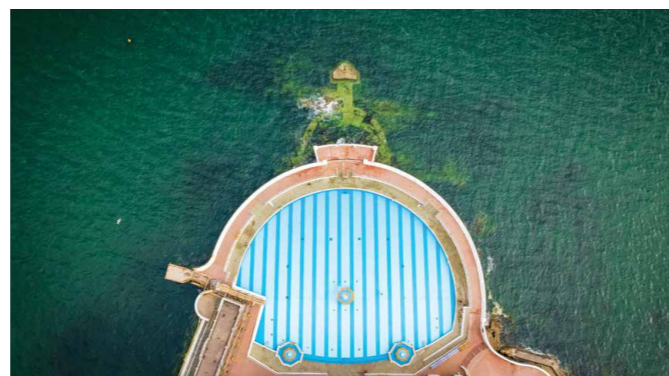
The historic property, which dates from the late 1500s when Plymouth was a thriving port, has survived the slum clearances of the early 1900s and the Blitz of World War Two. After undergoing vital structural and strengthening works, it's been reinterpreted as an immersive visitor experience, shining a light on some of the people who've lived in it over the past 400 years. www.theboxplymouth.com/outside-the-box/elizabethan-house



Tinside Lido

Located in the heart of Plymouth's stunning waterfront, Tinside Lido is an iconic destination that offers an unforgettable experience for tour groups of all sizes. This Grade II listed art deco pool combines history, beauty, and relaxation, making it a must-visit attraction.

The group-friendly amenities include discounted rates for larger bookings, ample seating, food and beverage options. Guided tours can also be arranged to showcase the Lido's rich history and architectural significance. www.tinsidelido.co.uk



GROUP FRIENDLY ACCOMMODATION

You will find there is so much to see and do in Britain's Ocean City for groups, why not extend your visit with us? We have a great range of accommodation for all types of group requests. For more information on group accommodation in Plymouth please visit www.visitplymouth.co.uk/traveltrade

Hotel	Bedrooms	Quality rating	Website	Group dining available
Duke of Cornwall	72	3 star	www.thedukeofcornwall.co.uk	Yes
Crowne Plaza	211	4 star	www.ihg.com	Yes
New Continental Hotel	99	4 star	www.newcontinental.co.uk	Yes
Leonardo	247	4 star	www.leonardohotels.co.uk	Yes
Boringdon Hall	42	5 star	www.boringdonhall.co.uk	Yes
Futures Inn	143	3 star	www.futuresinn.co.uk	Yes
China Fleet Country Club	41	-	www.china-fleet.co.uk	Yes
St Mellion	80	4 star	www.st-mellion.co.uk	Yes
Two Bridges Hotel	32	3 star	www.twobridges.co.uk	Yes
Elfordleigh	35	-	www.elfordleigh.co.uk	Yes
Invicta	23	4 star	www.invictahotel.co.uk	-
OYO	95	-	www.oyorooms.com	-
Premier Inn Derry's Cross	110	-	www.premierinn.com	-
Copthorne Hotel	135	3 star	www.millenniumhotels.com	Yes
Moxy Hotel	200	-	www.marriott.com	-
Pentillie Castle	11	-	www.pentillie.co.uk	Yes



GROUP FRIENDLY RESTAURANTS

The Terrace – Plymouth Hoe

Situated on Plymouth's waterfront, perched high above the beach, The Terrace offers the perfect place to enjoy great food and drinks, awesome events and breathtaking ocean views. From breakfast through to evening dining and from small plates to mains and desserts, The Terrace serves up delicious dishes all day, each one made using the freshest local ingredients.

Our juicy scallops are caught locally by our own fleet of fishing boats and processed by us on Plymouth Fish Quay. Our drinks menu has been specially selected to pair perfectly with our dishes or simply to enjoy with the view! www.terraceplymouth.co.uk



The Boathouse Restaurant

The Boathouse is a seafood restaurant, set in a unique location in the fisherman's arches on the Mayflower Steps, just a stone's throw from Plymouth's historic Barbican.

The speciality is wonderful fresh fish and shellfish, caught by our own day boats, along with a changing menu of locally sourced, seasonal produce. A quirky space, built into the boatman's stores on Commercial Wharf, The Boathouse Cafe is perfect for cosy coffees and delicious dining from daytime through to evening. There's plenty of outside space for dining al fresco, with fantastic views of Sutton Harbour. www.theboathouseplymouth.co.uk



Rockfish Plymouth

Rockfish, run by multi award-winning chef Mitch Tonks, is a relaxed place to enjoy some great fish and shellfish. Quality and freshness are key to us. It is no accident that our restaurants are located close to the finest fish markets in the country, the mornings catches of prime fish and shellfish are on your plate that very same day. That's why we say "tomorrow's fish are still in the sea".

www.therockfish.co.uk/restaurants/plymouth



Ocean View at The Dome

Enjoy fresh, local and seasonal produce, an extensive wine list and exciting range of cocktails in an opulent Art Deco interior... all set against the most breathtaking panoramic ocean views!

From an exciting range of nibbles to delicious main courses and rich desserts, we cater for all tastes with plenty of vegan and vegetarian options.

www.oceanviewplymouth.co.uk



Barbican Kitchen at Plymouth Gin

Housed in the world famous Plymouth Gin distillery, the Barbican Kitchen was established in 2006 by the Tanner Brothers, Chris and James. Their aim is to deliver fresh local food at a realistic price. The Barbican Kitchen takes full advantage of the superb larder available to us here in the Westcountry.

With the menu showcasing stunning local meats, vegetables and top quality fish from our fantastic network of suppliers. Barbican Kitchen is open 7 days for lunch and dinner. www.plymouthdistillery.com



Pier Masters House

A state-of-the-art, purpose built restaurant situated in a prime location overlooking Plymouth Harbour.

Pier Master's House seats over 300 with three balcony areas, a large deck with ample outdoor seating and upstairs and downstairs indoor areas. As well as two purpose-built bars, one on each floor, along with a state-of-the art kitchen. www.piermastershouse.com

Hook and Line – Royal William Yard

In The Hook & Line you will discover a quirky, rustic interior with bench seating and, true to the city's naval roots, Plymouth's first speciality Rum Bar. There's a specially selected wine list, Perrier Jouët champagne, cocktails and you can enjoy The Hook & Line's very own, signature ale, the Hook, Line & Sinker.

From breakfast to evening, the menu is simple and delicious, with specials chalked onto the wall. Expect fresh pastries and great coffee for breakfast, served from 8 to 11am. www.thehookandlineplymouth.co.uk

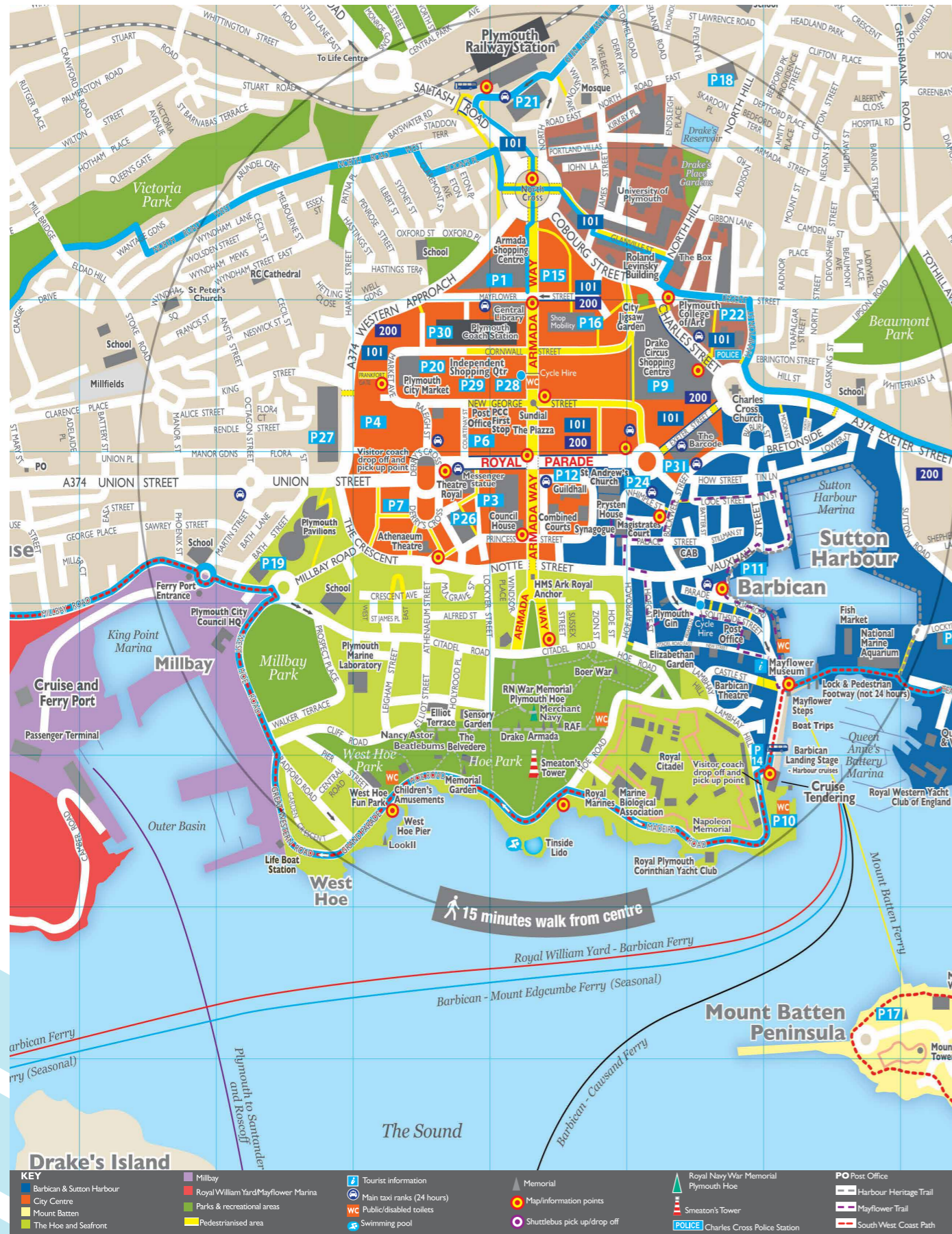


Marco Pierre White

The restaurant is a destination with a difference, taking a prestigious space on the top floor of the Crowne Plaza with stunning sea views over the Hoe and to Cornwall. Marco's Steakhouse is a contemporary and glamorous restaurant where you feel welcome and relaxed and you can enjoy a great menu, amazing steaks and fantastic service all in a superb setting. It's what Marco calls 'affordable glamour'.

www.mpwrestaurants.co.uk/our-brands/steakhouse-bar-and-grill/plymouth

VISITOR GUIDE MAP



Mount Edgumbe

Britain's historic park by the sea

Mount Edgumbe

Visit Mount Edgumbe House, the historic family collection and Earl's private garden; find out what life was like during WWII in our fantastic Blitz Experience. Drop into The Barrow Centre with its shops, arts and craft outlets and Farriers Café all based around the Victorian courtyard a stone's throw from the House. Come and see the working blacksmith and weaver bringing the estate back to life in the 21st century.

Mount Edgumbe House and Earl's Garden - open daily April to September, Sunday, Tuesday, Wednesday & Thursday 11.00 to 16.30 (last admission at 16.00). Group visits can be arranged at any time of year by using the contact details below.

Cremyll, Torpoint, Cornwall PL10 1HZ Tel. 01752 822 236 www.mountedgumbe.gov.uk www.facebook.com/mteedgumbe

Nestled on the edge of Plymouth Sound, Tinside Lido boasts breathtaking panoramic views of the sea

Providing the perfect backdrop for group outings. Its large saltwater pool, spacious sunbathing areas, and stunning 1930s architecture creating an atmosphere of timeless charm and tranquillity.



TINSIDE LIDO

Whether your group seeks leisurely swim, sun-soaked relaxation, or simply the joy of soaking in a historic site, Tinside delivers.

Our group-friendly amenities include discounted rates for larger bookings (£7.20 per person), ample seating, food and beverage options.

Guided tours can also be arranged to showcase the Lido's rich history and architectural significance.

For Tour guides looking for additional evening meal opportunities – buffet options are available upon request for our brand new events space with bar facilities.

DOWNLOADABLE ITINERARIES

We have a number of great downloadable itineraries to inspire you to build Plymouth product into your future programmes. Please visit <https://www.visitplymouth.co.uk/destination-plymouth/travel-trade/itineraries-for-groups>. Here is a selection of our itineraries for groups and travel trade.



MAYFLOWER MUSEUM

Explore the Mayflower story in new ways

mayflowermuseum.co.uk

COACH PARKING AND DROP OFF INFORMATION

Pick up and drop off locations are provided at:

- Derry's Cross Roundabout – PL1 1EU**
- Maximum waiting time 15 minutes
 - Two coach bays with large waiting shelters and accessible seating
 - Hatched area for continental coach passengers using the off-side door

- Mayflower Steps – PL1 2LR**
- Maximum waiting time 15 minutes
 - Single on road coach bay

- The Barbican, Lambhay Hill coach parking area**
- 3 bay coach parking area at the foot of Lambhay Hill with 2 hour maximum stay payable by cash or card at the machine

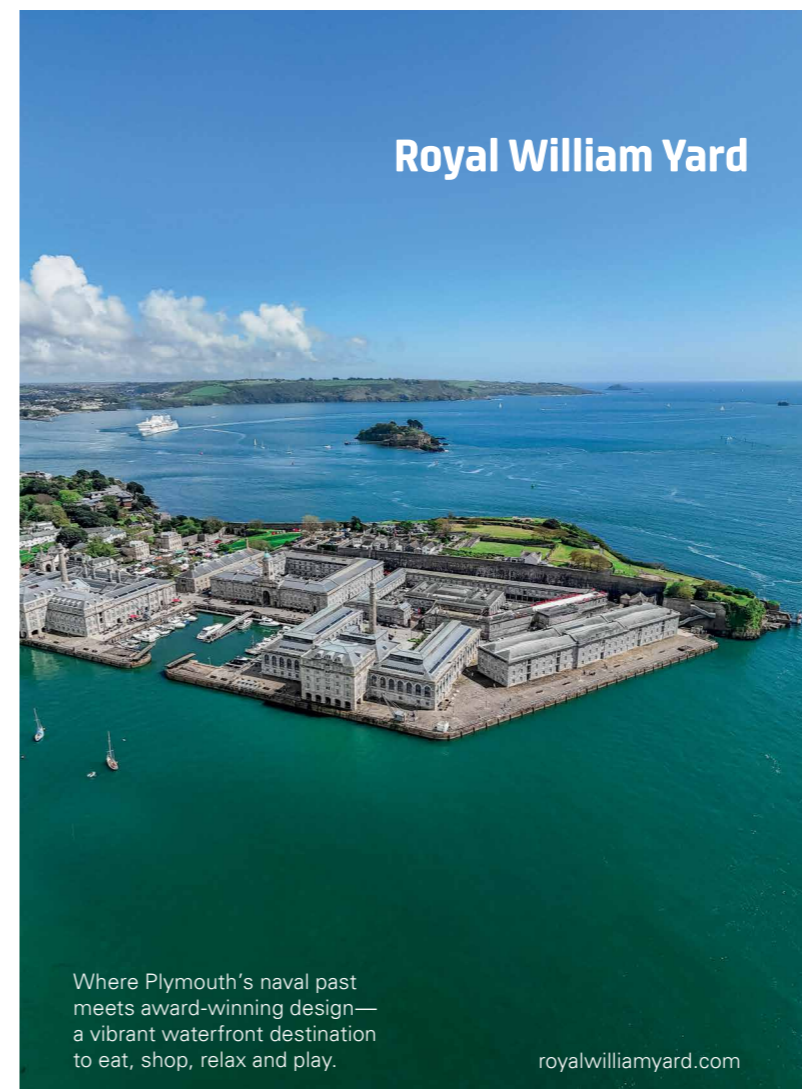
- Millbay Docks – PL1 3EW**
- Coaches can pick up Cruise Liner passengers from Millbay Docks if they are meeting a Cruise Liner

- Plymouth Coach Station – PL1 1HZ**
- Designed for long distance scheduled services but visiting coaches can be accommodated by contacting National Express in advance

- To book:**
1. Please book 48 hours in advance
 2. Call **01752 225635**
 3. A fee of £5 will be taken
- Coach layovers / parking / driver facilities
Coach parking and driver facilities are located at:

- Stagecoach SW Depot – PL9 7JT**
- Coach daytime and overnight parking
 - Toilet Drop
 - Exterior Coach Wash
 - Complimentary bus passes for drivers
 - Tel: **01752 495301**

- Plymouth Pavilions, Millbay Road, Plymouth – PL1 3LF**
- Visiting coaches will need to email the Pavilions at pp-security@plymouthpavilions.com with the date of stay and a booking name. Costs are as follows:
- day parking (9am to 6pm) – £20
 - night parking (6pm to 9am) – £25



Royal William Yard

Where Plymouth's naval past meets award-winning design— a vibrant waterfront destination to eat, shop, relax and play.

royalwilliamyard.com

Group Travel at Leonardo Hotel Plymouth

Ideally situated in the centre of Plymouth, the hotel is the perfect base to explore Britain's ocean city whilst simultaneously providing great links to visit Devon and Cornwall. The hotel offers 247 bedrooms of varying room types including 13 bedrooms adapted for wheelchair users.

After a long day sightseeing head to our in house Leo's Restaurant to indulge in a light bite or gourmet meal after a long day sightseeing, our spacious restaurant can accommodate group dinner bookings for up to 150 people.

GROUPS PROMOTION 2026

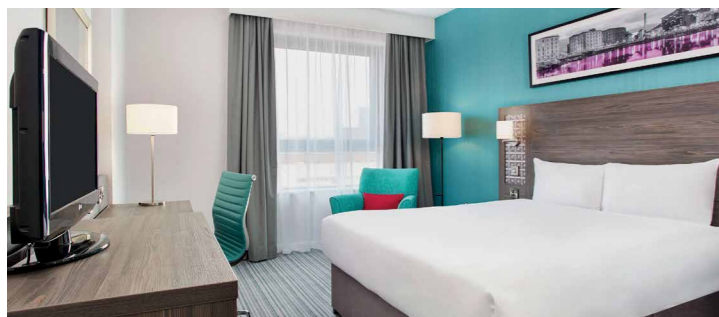
BB RATES (DBB Rates available on Request)

1 January 2026 – 3 March 2026 & 1 October 2026 – 31 December 2026

- From £45pp Bed & Breakfast Twin/Double with £25pp single Supplement
- Complimentary welcome drink on arrival

To secure your preferred dates please contact regionalgroupssouth@leonardohotels.com or call **+44 (0)207 1074 1017**

*Rates are subject to availability at time of booking and terms apply
1 FOC room for every 30 paying pax. Max 2 FOC rooms every group.*



BRIDGING THE TAMAR

FREE ENTRY

Visitor & Learning Centre at the Tamar Bridge PL5 1LP



Picnic Areas | Events | Exhibitions | Family Activities

FREE introductory guided talks
Tues, Thurs & Sat

OPEN DAILY 10AM - 4PM

bridgingthetamar.org.uk | bridgingthetamar
01752 361577

CROWNE PLAZA
AN IHG HOTEL
PLYMOUTH

A STUNNING HOTEL WITH SEA VIEWS
OVERLOOKING PLYMOUTH HOE

Plymouth is Britain's Ocean City, steeped in maritime history. No trip to Plymouth is complete without a visit to the Hoe, where you will enjoy panoramic views of Plymouth Sound and the iconic Smeaton's Tower lighthouse, and during summer months you can take a dip in the Art-Deco Tinside Lido. Base yourself here at the Crowne Plaza Plymouth where you are within minutes walking distance to Plymouth's fabulous attractions including The Hoe, Barbican, Plymouth Gin Distillery, Theatre Royal, The Box, National Marine Aquarium and the shopping mall to name just a few!



MARCO PIERRE WHITE
STEAKHOUSE BAR & GRILL

Once you have seen the wonderful sights of Plymouth why not join us for a delicious meal at the Crowne Plaza's Marco Pierre White restaurant. Situated on the penthouse floor of the hotel with panoramic sea views, you can enjoy a great menu, amazing steaks and fantastic service all in a superb setting. It's what Marco calls 'affordable glamour'.



Or for a real treat why not indulge in a luxurious afternoon tea with a charming array of sandwiches, freshly baked scones with clotted cream, delicious sweet treats and specially selected TeaPigs tea and Musetti coffee. For that added luxury, treat yourself to Prosecco Afternoon Tea with a glass of Bolla or Champagne Afternoon Tea with a glass of the delectable Laurent-Perrier.



For more information about the hotel please call 01752 639988 or visit www.crownplaza.com/plymouthuk

Crowne Plaza Plymouth
Armada Way, Plymouth PL1 2HJ

For more information or to book with the Marco Pierre White Steakhouse Bar & Grill restaurant please call 01752 639937 or visit www.mpwrestaurants.co.uk

BORINGDON

NESTLED ON THE EDGE OF DARTMOOR NATIONAL PARK, FIVE-STAR BORINGDON HALL HOTEL EFFORTLESSLY BLENDS HISTORIC ELEGANCE WITH CONTEMPORARY LUXURY, MAKING IT AN EXCEPTIONAL CHOICE FOR CORPORATE TRAVEL.



Guests can enjoy unforgettable experiences, from Michelin-starred dining at Acléaf to rejuvenating treatments at the award-winning adult-only Gaia Spa. With tailored corporate packages and exclusive rates, every detail is expertly managed, while versatile event spaces provide an ideal setting for conferences and business meetings.

01752 344455 | boringdonhall.co.uk
@boringdonhall | @gaiaboringdon | @acleafrestaurant



SET SAIL WITH PLYMOUTH BOAT TRIPS, THE SOUTH WEST'S PREMIER CRUISING AND FERRY COMPANY.

We offer a variety of boat trips, perfect for groups, tour operators and couriers.

SCENIC HARBOUR CRUISE

1 Hour cruise along the beautiful Devon & Cornish coasts, to where the mighty warships & nuclear submarines await!
DAILY: 11:00, 12:30, 14:00 & 15:30

MOUNT EDGCUMBE COMBINATION CRUISE

Combining our 1hr scenic harbour cruise with a stop off at historic Mount Edgcumbe Country Park.

FERRY SERVICES TO CREMYLL, ROYAL WILLIAM YARD, CAWSAND & SALTASH AVAILABLE

Hop on board one of our foot ferry services, connecting Devon and Cornwall.

Dedicated Events Team - On hand to tailor your trip to your group's needs.

WHY CRUISE WITH US?
Group discount rates available!
FREE Parking
- Show us your ticket and we will reimburse the cost of coach parking.
Optional Extras
- Local Cream Tea and Cornish Pasties available onboard.

BOOK WITH US:
CALL: 01752 253153
EMAIL: info@plymouthboattrips.co.uk
www.plymouthboattrips.co.uk

PLYMOUTH BOAT TRIPS
CRUISING - FERRIES - FISHING



Buckfast Abbey is a registered Charity No. 232497

NORTHGATE
HOUSE HOTEL
at Buckfast Abbey

"Discover just how delicious our new dinner menu is!"

Breakfast served 7am-10am,
Dinner served 5pm-8pm
Booking is essential,
please call 01364 645630



For latest offers visit
www.buckfast.org.uk/northgate-hotel

Northgate House Hotel,
Grange Road,
Buckfast,
Devon TQ11 0EJ



Explore Devon's Hidden Gem

Enhance your group's visit with one of our experience packages. Contact us to find out more about how to make your group's visit unique.

Groups 01364 645532
Accommodation: 01364 645630
Quote PLGPT5

DEVON'S
TOP ATTRACTIONS

Abbey Church • Working Monastery • Exhibition • Gardens • Shops • Restaurants • Hotel & Conference Centre
Well behaved dogs on short leads welcome
Buckfast Abbey, Buckfastleigh, Devon TQ11 0EE • www.buckfast.org.uk

The Tamar Valley

A National Landscape & UNESCO World Heritage Site

VISIT

Discover the Tamar Valley, the Southwest's best-kept secret. Bridging Devon and Cornwall, this hidden gem is filled with natural beauty, rich history, and timeless charm. It's a place brimming with treasures, just waiting to be explored.

EXPERIENCE

- Stop in Tavistock, a UNESCO World Heritage site and the home of the Devon Cream Tea.
- Spend time in Launceston, the ancient capital of Cornwall, its Norman castle offering spectacular views.
- Cross our iconic bridges and learn their fascinating history at Bridging the Tamar Visitor Centre.
- National Trust Cotehele awaits, a stunning Tudor House with extensive gardens, orchards and watermill, beside the River Tamar.
- Breath lungfuls of salty air at Mount Edgcumbe, the former home of the Earls of Mount Edgcumbe beside the sea.
- All aboard The Tamar Valley Line, for a scenic train journey on one of the gems of Britain's rail network.

STAY

Hotel Endsleigh, Tavistock
Two Bridges Hotel, Princetown
The Bedford Hotel, Tavistock
The Arundell, Launceston
St Mellion Resort, Saltash

GROUPS WELCOME



VISIT TAMAR VALLEY
BRIDGING DEVON AND CORNWALL



www.visittamarvalley-grouptravel.co.uk